



GAT MONTHLY MEMBERSHIP PROGRESS REPORT

Results as of: 12/31/2023

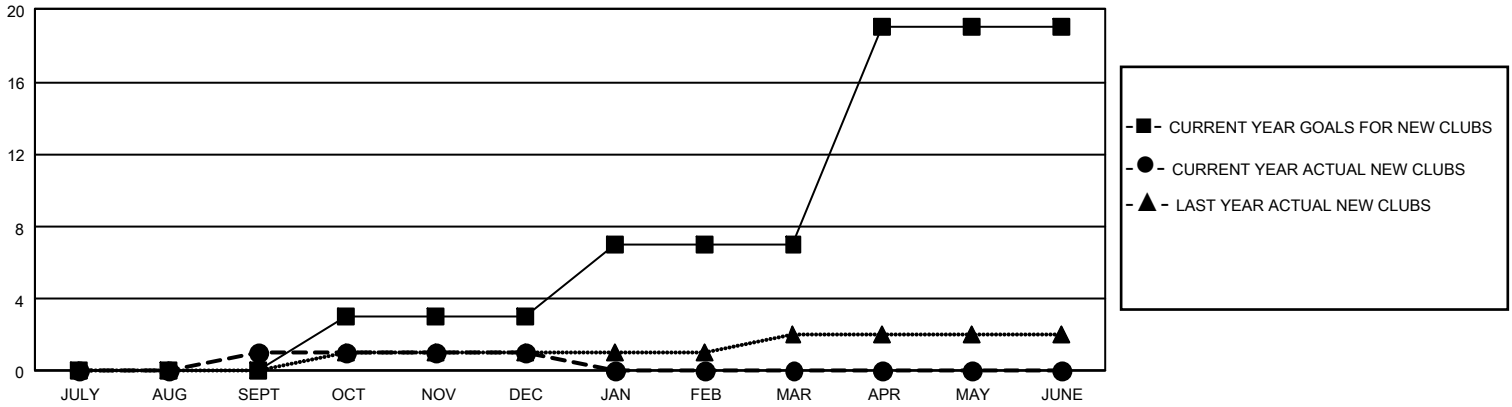
GMT Constitutional Area 4, Group A

REPORT DOES NOT INCLUDE CLUBS IN UNDISTRICTED AREAS.

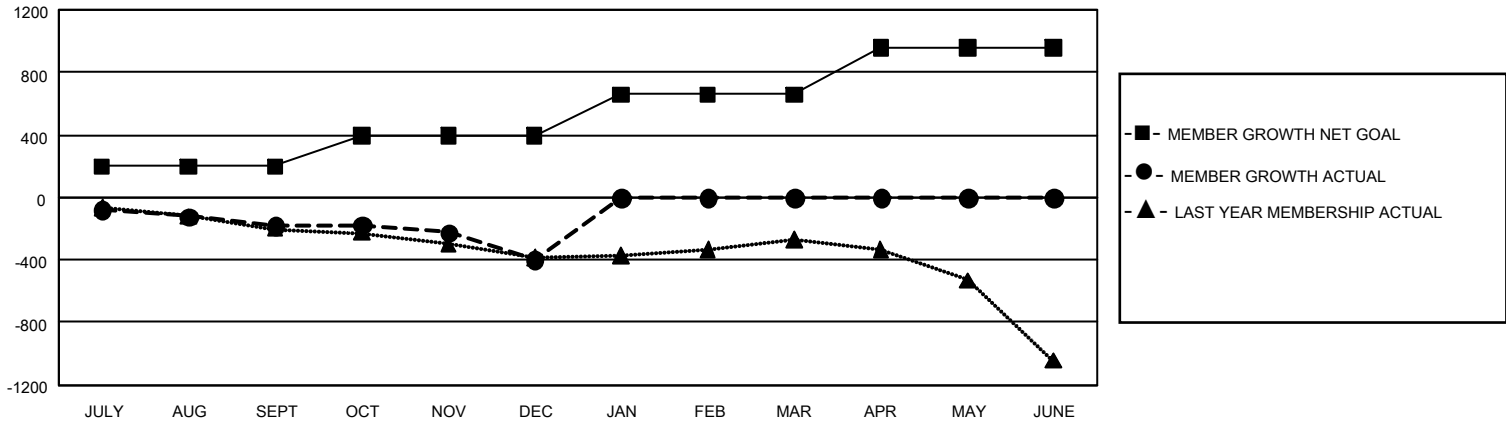
Clubs			
RESULTS FOR 2023-2024			
QUARTER	NEW CLUB GOAL	NEW CLUBS	DROPPED CLUBS
JULY/AUG/SEPT	0	1	9
OCT/NOV/DEC	9	0	3
JAN/FEB/MAR	12	0	0
APR/MAY/JUNE	36	0	0

Members			
RESULTS FOR 2023-2024			
QUARTER	MEMBER GROWTH NET GOAL	MEMBER GROWTH ACTUAL	DROPPED MEMBERS ACTUAL (including transfers)
JULY/AUG/SEPT	198	195	355
OCT/NOV/DEC	199	302	490
JAN/FEB/MAR	262	0	0
APR/MAY/JUNE	300	0	0

GOALS AND ACTUAL NEW CLUBS CUMULATIVE



GOALS AND ACTUAL MEMBERS CUMULATIVE



DROPPED CLUBS: 12	264 CLUBS OF 952 ADDED 1 OR MORE NEW MEMBERS	<u>GENDER DISTRIBUTION</u>	
		MALE 15,357 (75.61%) FEMALE 4,952 (24.38%) NON BINARY 0 (0.00%) PREFER NOT TO ANSWER 1 (0.00%)	
<u>DROPPED MEMBERS</u>		CLICK HERE FOR CUMULATIVE MEMBERSHIP DATA	TOTAL FAMILY UNIT MEMBERS 594
DECEASED 121 CLUB CANCELLED 20 OTHER 704 TOTAL 845			FAMILY MEMBERS PAYING HALF DUES 298